



GMT MONTHLY MEMBERSHIP PROGRESS REPORT

Results as of: 5/31/2018

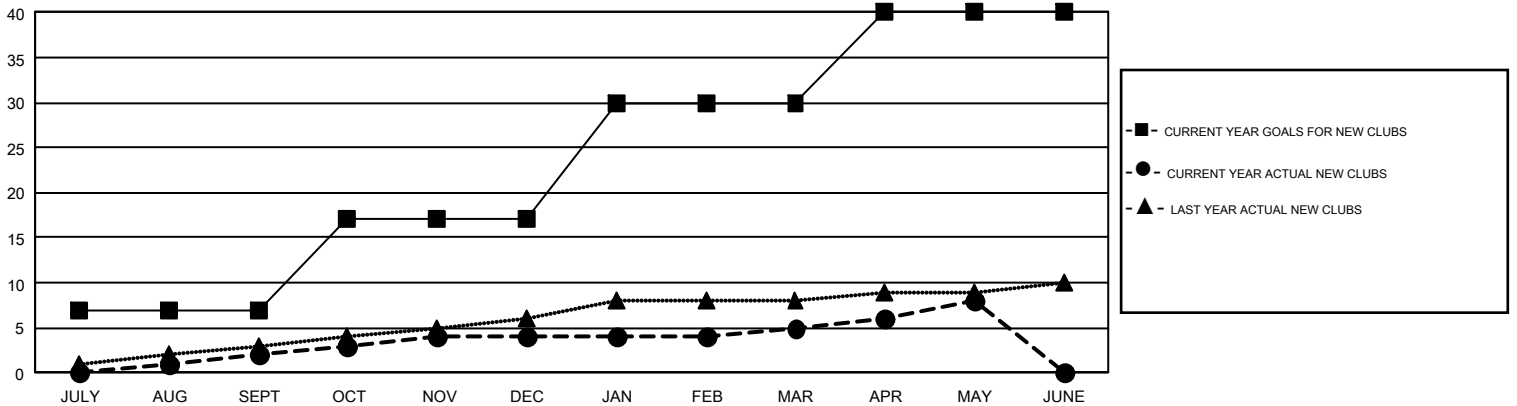
GMT Constitutional Area 1, Group D

GMT: MICHAEL MOLEND A

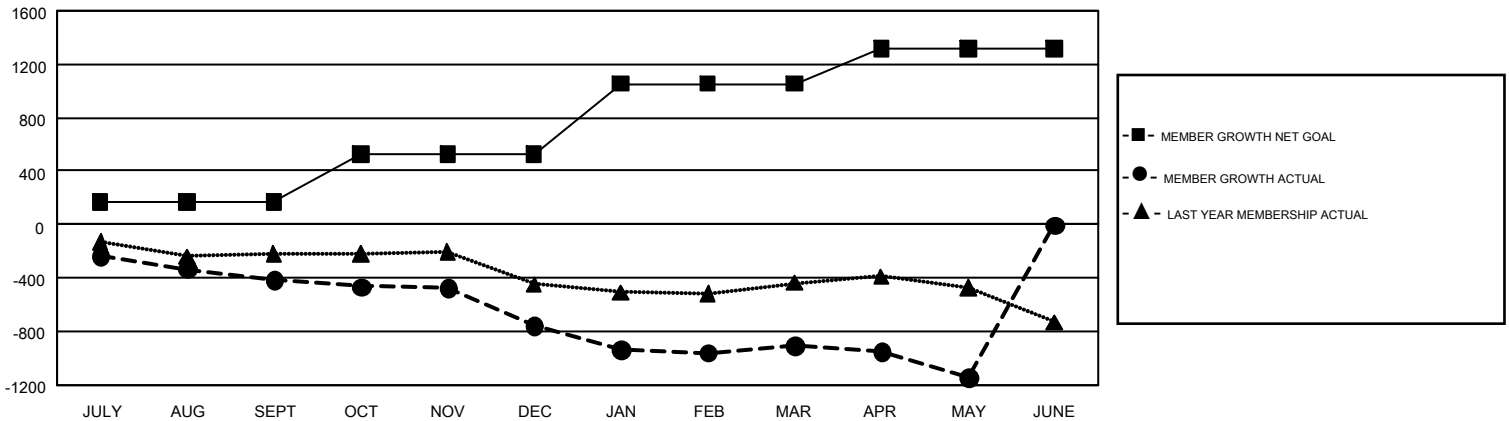
REPORT DOES NOT INCLUDE CLUBS IN UNDISTRICTED AREAS.

Clubs				Members			
RESULTS FOR 2017-2018				RESULTS FOR 2017-2018			
QUARTER	NEW CLUB GOAL	NEW CLUBS	DROPPED CLUBS	QUARTER	MEMBER GROWTH NET GOAL	MEMBER GROWTH ACTUAL	DROPPED MEMBERS ACTUAL (including transfers)
JULY/AUG/SEPT	7	2	5	JULY/AUG/SEPT	169	954	1,243
OCT/NOV/DEC	10	2	12	OCT/NOV/DEC	355	1,040	1,286
JAN/FEB/MAR	13	1	5	JAN/FEB/MAR	528	1,027	1,049
APR/MAY/JUNE	10	3	2	APR/MAY/JUNE	266	655	841

GOALS AND ACTUAL NEW CLUBS CUMULATIVE



GOALS AND ACTUAL MEMBERS CUMULATIVE



DROPPED CLUBS: 24	950 CLUBS OF 1,535 ADDED 1 OR MORE NEW MEMBERS	<u>GENDER DISTRIBUTION</u>
<u>DROPPED MEMBERS</u>		MALE 35,342 (74.12%)
DECEASED 623		FEMALE 12,342 (25.88%)
CLUB CANCELLED 145	CLICK HERE FOR CUMULATIVE MEMBERSHIP DATA	TOTAL FAMILY UNIT MEMBERS 9,361
OTHER 3,650		FAMILY MEMBERS PAYING HALF DUES 4,747
TOTAL 4,418		